

# ReflowX

Shaping a Sustainable Tomorrow

---

## 1x Siemens V94.2 Gas Turbine & 1x ABB Steam Turbine

Technical Information Pack

CONFIDENTIAL



---

[www.reflowx.com](http://www.reflowx.com)

[info@reflowx.com](mailto:info@reflowx.com)

+971 055 763 4099

Office 101, Makteb Building 2, Dubai Production City

Sheikh Mohammed Bin Zayed Road, Dubai, UAE

CONFIDENTIAL

## Description

| Specification          | Details                                    |
|------------------------|--|
| Manufacturer           | M/S KW (Germany) & ABB, Germany            |
| Model (Gas Turbine)    | V-94.2 & DK2056                            |
| Year of Manufacture    | 1987 & 1991                                |
| Commissioning Year     | 1988 & 1992                                |
| Condition              | Used                                       |
| Location               | Asia                                       |
| Qty Available          | 1x (1x Gas Turbines & 1x Steam Turbines)   |
| Power Output           | 95 MW GT & 112.2 MW ST                     |
| Fuel Type              | Multi-fuel; (rated for Gas, HSD, and LSFO) |
| Frequency (Hz)         | 50 Hz                                      |
| Generator / Alternator | KWU  |
| Operating Hours        | 166,928 OH & 161,667 OH                    |
| Total Starts           | 4,486 & 3,044                              |
| Current Status         | Preserved since October 2022               |

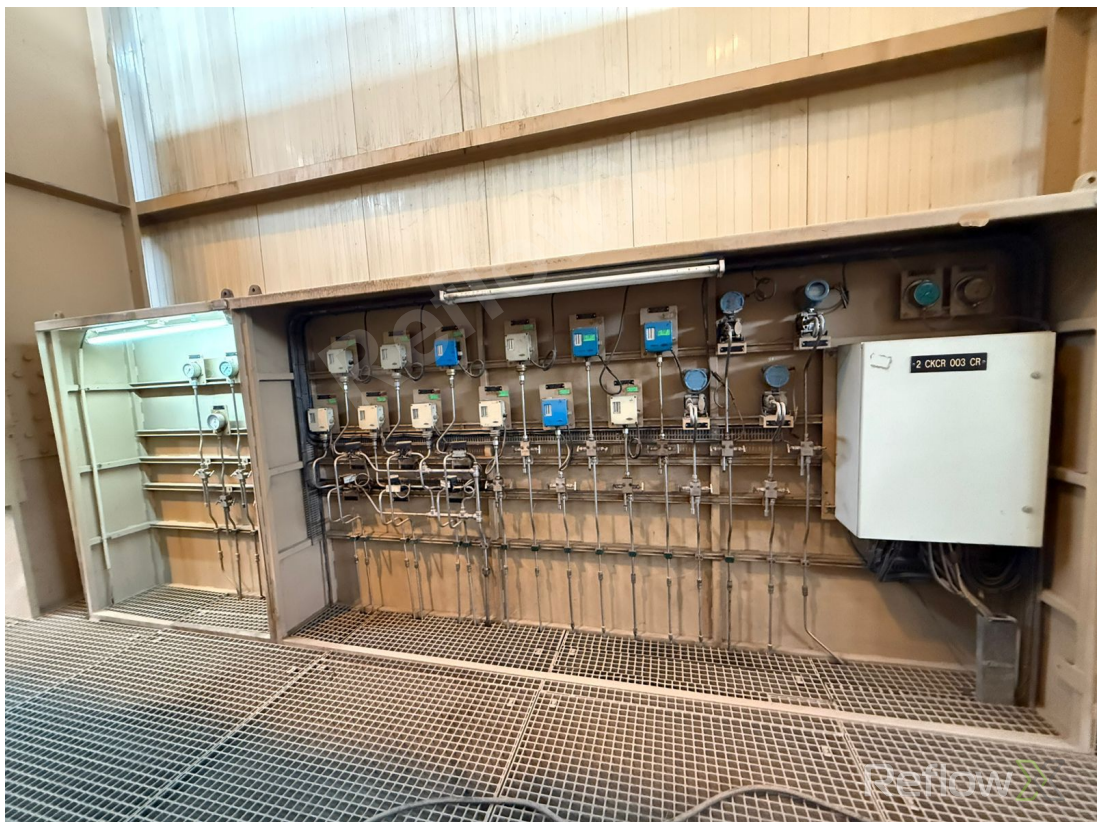
## Technical Details

- Equipment Summary
- This power package features a 95 MW Siemens/KW V-94.2 Gas Turbine and a 112.2 MW ABB DK2056 Steam
- Turbine. The gas turbine operates with a 16-stage compressor and 4-stage turbine , while the steam turbine is a
- 2-cylinder design with 16 reaction stages. Both units come with their associated generators, transformers, and a
- Balcke Durr Heat Recovery Steam Generator (HRSG).

## Scope of Supply

| #  | Component / Item  |
|----|---|
| 1  | Gas Turbine Specifications  |
| 2  | Manufacturer: M/S KW (Germany).   |
| 3  | Model: V-94.2.  |
| 4  | Base Load Rating: 95 MW on Gas. 92 MW on HSD/LSFO.  |
| 5  | Compressor Stages: 16.  |
| 6  | Turbine Stages: 4.  |
| 7  | No. of Combustors: 2.   |
| 8  | Starting Device: S.F.C Generator. 1400-6100 KW Static Frequency Converter manufactured by AEG-TELEFUNKEN. |
| 9  | Steam Turbine Specifications  |
| 10 | Manufacturer: ABB, Germany.   |
| 11 | Type: DK2056.   |
| 12 | Rated Power: 112.2 MW.  |
| 13 | Cylinders/Stages: 2 Cylinders. 16 Reaction stages.  |
| 14 | Gas Turbine Generators:   |
| 15 | Manufacturer: KWU.  |

| #  | Component / Item   |
|----|--|
| 16 | Type: TLRI 108/41.   |
| 17 | Rated Output: 135 MVA.   |
| 18 | Rated Voltage: 10.5 KV.  |
| 19 | Transformers & HRSG  |
| 20 | Unit 2 Transformer: Manufactured by TRAFU UNION. Rated Power: 117.6/147 MVA.                       |
| 21 | Unit 10 Transformer: Manufactured by TOSHIBA. Rated Power: 90/135 MVA.                             |
| 22 | HRSG (Unit 2): Manufactured by Balcke Durr. Boiler Output: 208 T/H. Design Gauge Pressure: 62 bar. |



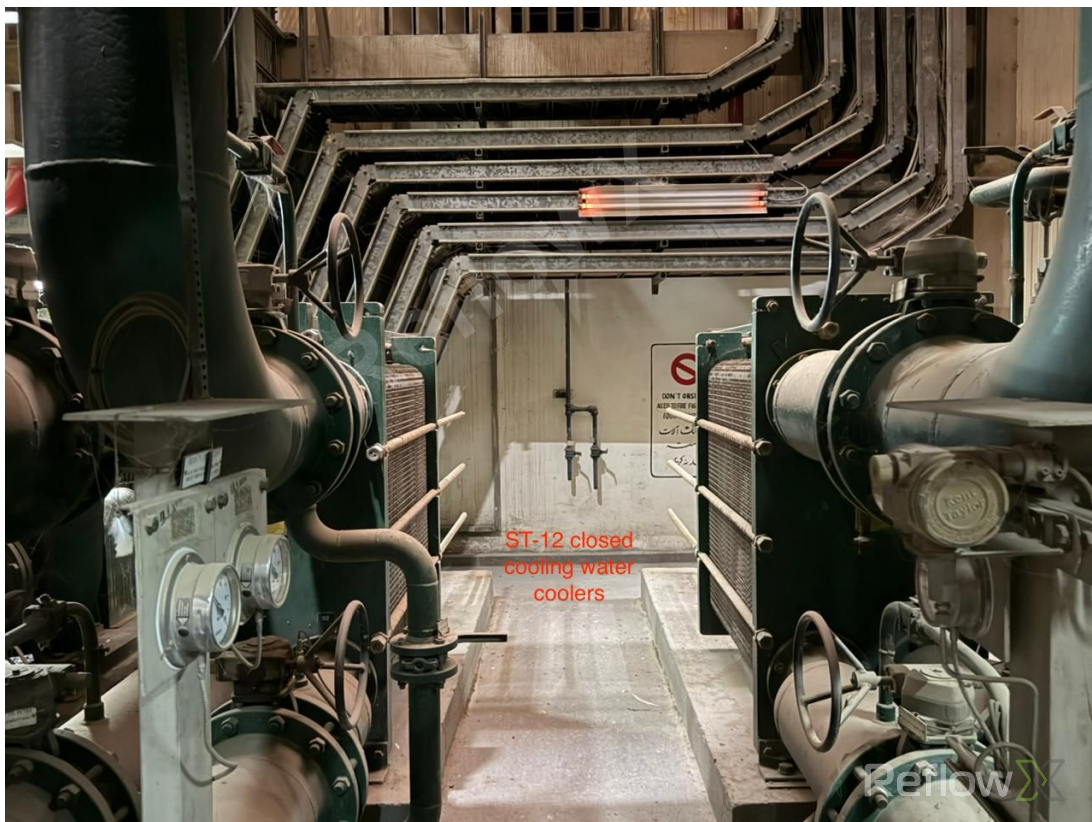
















## Contact Information

---

### Website

[www.reflowx.com](http://www.reflowx.com)

### Email

[info@reflowx.com](mailto:info@reflowx.com)

### Phone

+971 055 763 4099

### Location

Office 101, Makteb Building 2, Dubai Production City  
Sheikh Mohammed Bin Zayed Road, Dubai, UAE

Shaping a Sustainable Tomorrow

CONFIDENTIAL