

ReflowX

Pratt & Whitney FT4 Twin Pac Gas Turbine

Pratt & Whitney FT4 Twin Pac Gas Turbine

Description

Manufacturer	Pratt & Whitney
Model (gas turbine)	FT4 A-9 Twin Pac (TP4-2)
Unit Type	Aero-Derivative Gas Turbine Power Plant (Twin Pac)
YOM	1971
Total Operating Hours	2,108 hours
Number of Starts	288 starts
Country	USA
Power Output	42 MW total (Twin Pac)
Preservation Status	Installed
Location	USA
Qty available	1 unit
Fuel	<ul style="list-style-type: none"> • Natural Gas • Liquid fuels (Jet Fuel / Light Distillates)
Frequency	60 Hz
Thermal Efficiency	~34–35% (simple cycle)



Pratt & Whitney FT4 Twin Pac Gas Turbine

Condition Summary (High-Level)

Engine 1

- Last Shop Repair/Overhaul: October 2023
- Hours Since Last Overhaul: 1,067 h
- Starts Since Last Overhaul: 150
- Last Operated: October 2025
- Current Condition: Removed from service due to a chip detector alarm (cause currently unknown).

Engine 2

- Total Hours: 2,108 h
- Total Starts: 288
- Last Operated: November 2025
- Current Condition: In service with no known issues.



Pratt & Whitney FT4 Twin Pac Gas Turbine

Condition Summary (High-Level)

Generator Details

- Manufacturer: Electric Machinery
- Rating: 46.5 MVA
- Power Factor: 0.90
- Armature Volts: 13,800 V (13.8 kV)
- Phases: 3
- Exciter Type: Brushless (shaft-mounted)
- Rated Field Amps: 480 A
- Rated Field Volts: 250 V

Generator Details

- Last Overhaul: December 2003
- Hours Since Overhaul: 4,438 h
- Starts Since Overhaul: 1,102
- Current Condition: No known issues.

Control System

- System Type: Rockwell ControlLogix PLC-based controls (upgraded approximately in 2008).

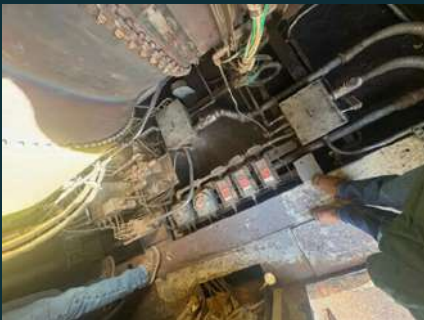
Pratt & Whitney FT4 Twin Pac Gas Turbine

Photos



Pratt & Whitney FT4 Twin Pac Gas Turbine


Photos




ReflowX

Contact Information

 Dubai, United Arab Emirates

 info@reflowx.com

 +971 503846311

 www.reflowx.com