

ReflowX

Solar Turbines Taurus 60 Gas Turbine | 5.2 MW

Solar Turbines Taurus 60 Gas Turbine 5.2 MW

Description

Manufacturer	Solar Turbines
Model (gas turbine)	Solar Taurus 60 (7001)
Output	5.2 MW
YOM Package	1994 / 1997
YOM Engine	2018
Hours	32,277
RPM	1500
Voltage	6300V
Condition	Used
Generator	Leroy Somer (YOM 2008)
Location	Spain
Qty available	1
Frequency	50 Hz
Combustion	Single Fuel
Fuel	Natural Gas

Solar Turbines Taurus 60 Gas Turbine 5.2 MW

Technical Details

Borescope Inspection Summary (Jan 2022)

- Total operating hours at inspection: ~27,796 hrs
- Report conclusion: "Normal condition considering hours"

Compressor / Inlet

- All inspected areas recorded in normal condition

Turbine Section

- All turbine stages (nozzles and blades): normal condition

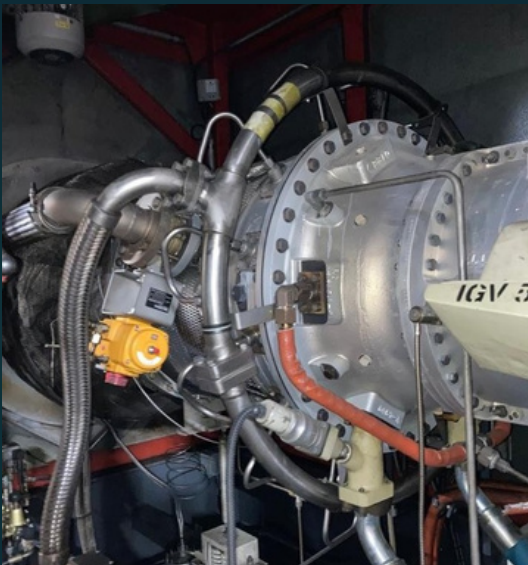
Combustion System

- Combustor and injectors: normal condition

Overall Assessment


- No defects identified during inspection
- Clean borescope result at ~28k hrs
- Maintained under OEM service with preserved condition for restart


Solar Turbines Taurus 60 Gas Turbine 5.2 MW




ReflowX

Contact Information

 Dubai, United Arab Emirates

 info@reflowx.com

 +971 503846311

 www.reflowx.com