

ReflowX

GE Frame 5 (MS5001N) Power Barges | 160 MW Each



## GE Frame 5 (MS5001N) Power Barges | 160 MW Each

### Description

This offering includes two self-contained power generation barges (Barge 1 and Barge 4). Each barge is equipped with eight (8) General Electric Frame 5 Model N (MS5001N) heavy industrial gas turbines, providing a total output of 160 MW per barge. Both barges are fully black start capable and ready to generate at a 138kV output.

### Common Auxiliaries & Capabilities (Both Barges)

- Main Transformer: Generator Step Up 160MVA Transformer
- Auxiliary Transformer: 480/13.2kV - 1 MVA Auxiliary Transformer
- Fire Protection: Cardox CO2 Fire Protection System for GTs
- Battery System: 125VDC Continuously Monitored Battery System
- Starting Engines: Cummins KTA19 Diesel Starting Engines
- Combustion Tech: Lean Head End Combustion Liners for Reduced NOx Emissions
- Utility Connections: 12" Natural Gas, 6" Fuel Oil, and 6" Water Supply to Transformer Deluge
- Maintenance Notes: GE TIL 1576 Rotor End of Life Inspections have been completed on serviced rotors since the release of the TIL and installed during major inspections.
- Generation Readiness: 138kV transmission outlet, fuel gas or liquid fuel source capability, and shore power for offline standby.

## GE Frame 5 (MS5001N) Power Barges | 160 MW Each

### Barge 1: Technical & Commercial Specifications

1. Total Output: 160 MW
2. Fuel Type: Dual Fuel
3. Control System: Upgraded Petrotech PLC Turbine-Generator HMI Control Systems (Installed in 2017)
4. Excitation System: DECS400 Generator Static Excitation Systems
5. Transformer: Replaced with a Westinghouse unit
6. Note: Unit 8 on this barge is designated as retired

### Barge 1 - Unit Operating Data

Unit	DMNC Rating (Summer/Winter)	Total Fired Hours	Total Starts	Generator Field Replacement
<b>Unit 1</b>	19.4/23.9	17511.9	3554	1/21/2006
<b>Unit 2</b>	19.2/23.9	17578.6	3942	
<b>Unit 3</b>	18.2/23.4	18136.8	4060	3/29/2008
<b>Unit 4</b>	16.7/21.7	18129.2	4306	2/10/2001
<b>Unit 5</b>	17.0/22.4	17361.3	3396	5/11/2016
<b>Unit 6</b>	16.6/21.7	16454.8	3578	4/11/2017
<b>Unit 7</b>	17.8/22.3	14964.8	3054	4/19/2001
<b>Unit 8 (Retired)</b>	15.8/21.5	15536.7	3427	4/25/2008

## GE Frame 5 (MS5001N) Power Barges | 160 MW Each

### Barge 4: Technical & Commercial Specifications

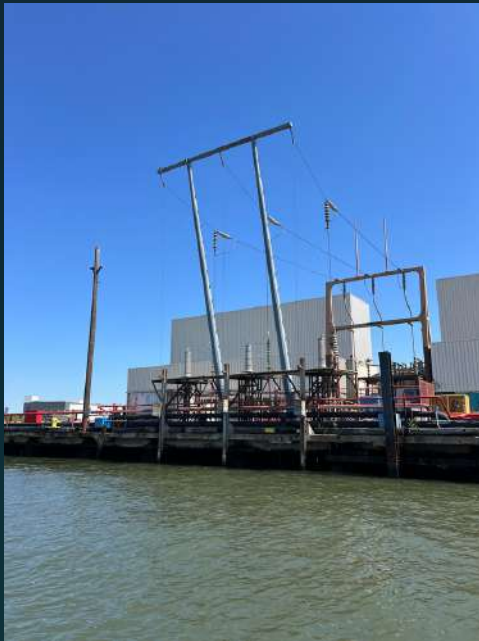
1. Total Output: 160 MW
2. Fuel Type: Liquid Fuel only (Can be converted to Dual Fuel)

### Barge 4 - Unit Operating Data

Unit	DMNC Rating (Summer/Winter)	Total Fired Hours	Total Starts	Generator Field Replacement
Unit 1	18.4/23.9	14554.1	3705	
Unit 2	18.4/23.8	15152.2	3720	4/26/2017
Unit 3	18.5/22.0	14084.2	3557	8/5/2001
Unit 4	17.1/21.8	15160.3	3377	
Unit 5	17.1/22.3	15357.7	3689	
Unit 6	18.7/23.9	13829.8	3407	4/14/2015
Unit 7	18.4/23.8	14755.8	3563	12/8/2020
Unit 8	17.7/22.6	15530.5	3594	11/15/2002

# GE Frame 5 (MS5001N) Power Barges | 160 MW Each

## Photos



# GE Frame 5 (MS5001N) Power Barges | 160 MW Each

## Photos



Network: Apr 9, 2026 at 8:22:33 AM EDT  
Local: Apr 9, 2026 at 8:22:33 AM EDT




Network: Apr 9, 2026 at 7:56:29 AM EDT  
Local: Apr 9, 2026 at 7:56:29 AM EDT




ReflowX

## Contact Information

 Dubai, United Arab Emirates

 [info@reflowx.com](mailto:info@reflowx.com)

 +971 503846311

 [www.reflowx.com](http://www.reflowx.com)