

ReflowX

2017 Solar Turbines Taurus 70 Gas Turbine Package

2017 Solar Turbines Taurus 70 Gas Turbine Package

Description

Manufacturer	Solar Turbines (A Caterpillar Company)
Model (gas turbine)	Taurus 70
Equipment Type	Industrial Gas Turbine Generator Set
Year	2017
Condition	New Unused
Location	China
Qty available	2 Units
EOH	0 h
ISO Power Rating	8.0 MW
Fuel Type	Natural Gas
Plant Configuration	Simple Cycle
Shaft Configuration	Single Shaft
Frequency	50 Hz



2017 Solar Turbines Taurus 70 Gas Turbine Package

Technical Details

Maintenance & Condition Summary

The Solar Turbines Taurus™ 70 gas turbine generator set was manufactured in 2017 and represents a modern, low-emissions industrial gas turbine platform. The unit is configured for natural gas operation and is equipped with SoLoNOx® dry low-NOx combustion, indicating a gas-only, emissions-controlled configuration.

Scope of Supply Main Equipment

Main Equipment

- Solar Turbines Taurus™ 70 gas turbine
- Epicyclic reduction gearbox
- Generator / alternator
- Common baseframe / skid

Fuel & Combustion Systems

- Natural gas fuel system
- SoLoNOx® dry low-emissions combustion system

Mechanical & Auxiliary Systems

- Turbine lube oil system
- Gearbox lube oil system
- Starting system
- Ventilation and combustion air system
- Exhaust system (diffuser / transition)

Electrical & Control

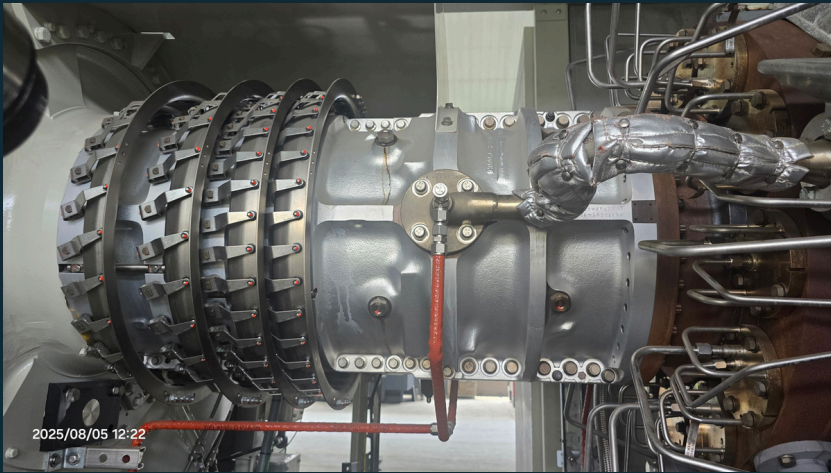
- Turbine control system
- Generator control and protection
- Local control panels and instrumentation
- Auxiliary power supply systems (AC/DC)

2017 Solar Turbines Taurus 70 Gas Turbine Package



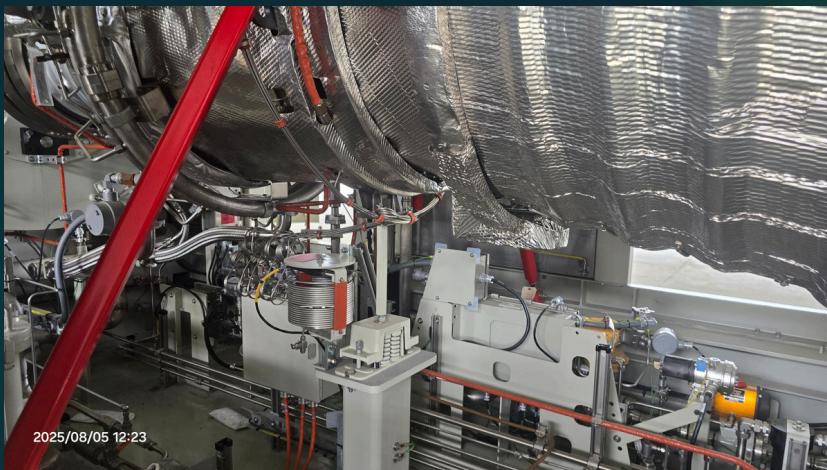
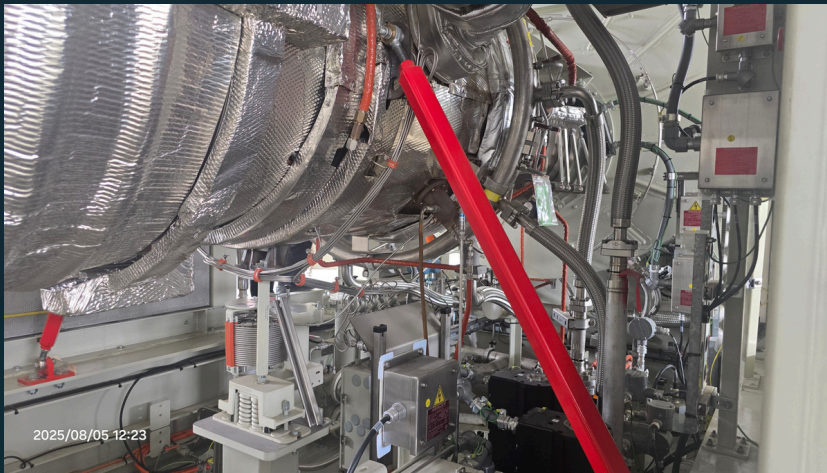


2017 Solar Turbines Taurus 70 Gas Turbine Package



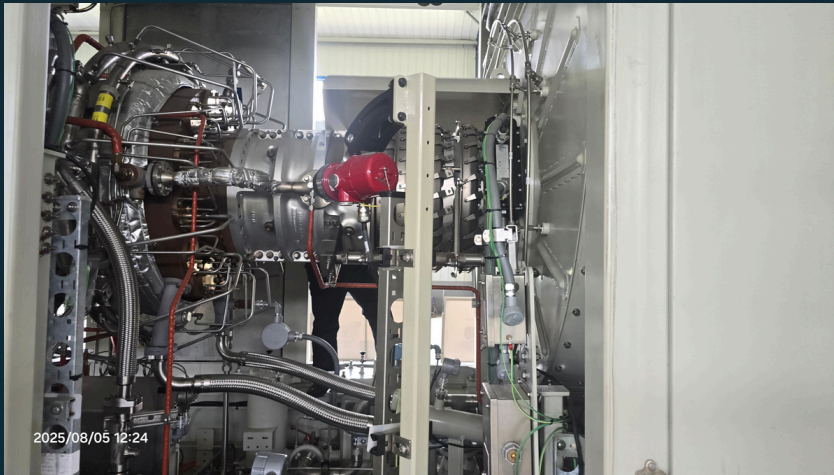


2017 Solar Turbines Taurus 70 Gas Turbine Package



ReflowX

2017 Solar Turbines Taurus 70 Gas Turbine Package



2017 Solar Turbines Taurus 70 Gas Turbine Package



ReflowX

2017 Solar Turbines Taurus 70 Gas Turbine Package



Solar Turbines
A Caterpillar Company

GAS TURBINE DATA PLATE

MODEL NO. TAURUS 70

SERIAL NO. 10801SA GSC

ENGINE PN B181S-A0G00P00

SERIAL NO. 1014B

*POWER (G/L) 7964 KWe / NA KWe

NOM (RPM) 15143 50Hz / 15158 60Hz

NPT (RPM) NA

IGV SETTING +5.0°

*TS BASE (G/L) 1363°F / NA°F

SETPPOINT (G/L) TS 1400°F / NA°F
FULL LOAD

UNCORRECTED, ISO VALUES

FWD PLANE TDC HOLE # 0

AFT PLANE TDC HOLE # 47

(G/L)=GAS/LIQUID, NA=NOT APPLICABLE
1034040-997
MANUFACTURED IN USA

Solar Turbines
A Caterpillar Company

ENGINE SOLONOX DATA PLATE

SERIAL NO. 1014B

LOAD(%)	PILOT(S)		TS (°F)		TP2 (°F)	
	NA	NA	NA	NA	NA	NA
100%	6.0	1343	NA			
75%	NA	1343	NA			
70%	NA	1313	NA			
50%	6.0	1313	NA			

SPAC MIN PILOT [%] 2.8

LOAD(%)	PILOT(S)		TS (°F)	
	NA	NA	NA	NA
NA	NA	NA	NA	
NA	NA	NA	NA	
NA	NA	NA	NA	
NA	NA	NA	NA	

TS & TP2 VALUES ARE UNCORRECTED

MANUFACTURED IN USA
1034040-998

