

ReflowX

Solar Titan 130 Gas Turbine

Solar Titan 130 Gas Turbine

Description

Manufacturer	Solar Turbines
Model (gas turbine)	Titan 130
Unit Type	Mobile Gas Turbine Generator Package
YOM	2015
Operating Hours	28,900 hours
Starts	391
Country	Asia
Status	Currently shut down
Power Output	15 MW
Condition	Used; approaching first major overhaul interval
Configuration	Single-shaft, complete package including ABB generator
Fuel	Natural Gas only
Frequency	50 Hz
Rated Power	11,989 kW

Solar Titan 130 Gas Turbine

Technical Specifications

1. Compressor Parameters

- Stages: 14 stages (6 variable stages)
- Pressure Ratio: 17:1
- Flow Rate: 47.8 kg/s
- Speed: 11,197 rpm
- PCD Pressure: 1,552 kPa

2. Combustor Parameters

- Type: Annular
- Ignition Method: Torch ignition (1 igniter)
- Number of Fuel Nozzles: 21

3. Turbine Parameters

- Type: Reaction
- Stages: 3
- Turbine Inlet Temperature: 1,121°C
- Exhaust Temperature: 475°C

4. Generator & Gearbox Parameters

- Generator Output: 11,000 V / 787 A
- Rated Capacity: 14,986 KVA
- Phase: Three-phase
- Generator Speed: 1,500 rpm
- Gearbox Reduction Ratio: 7.45:1 (Input: 11,197 rpm / Output: 1,500 rpm)

Solar Titan 130 Gas Turbine

Technical Assessment & Findings

Technical Assessment & Findings

- **Operational History:** The unit has maintained a stable operating life with a relatively low cyclic history of only 391 starts.
- **Maintenance Status:** No major overhaul has been performed to date. The machine is currently approaching its first major overhaul interval, which should be factored into operational planning and valuation.
- **Inspection Data:** Internal borescope inspection data is not available at this stage.
- **Market Opportunity:** The unit is a 50 Hz configuration packaged with an ABB generator. A second identical unit may become available in the near future, presenting a potential multi-unit procurement opportunity.

Included Components / Package Description

- Main gas turbine configuration (compressor, combustor, and turbine)
- Reduction gearbox with vibration monitoring (20 g alarm / 30 g trip)
- 11 kV, 50 Hz Three-phase Generator
- Full gas turbine enclosure equipped with H2 (5% low / 10% high) and CO (10% low / 20% high) concentration monitoring
- Lube oil system including headers and filter differentials
- Gas control system and filtration
- Nitrogen and air supply systems

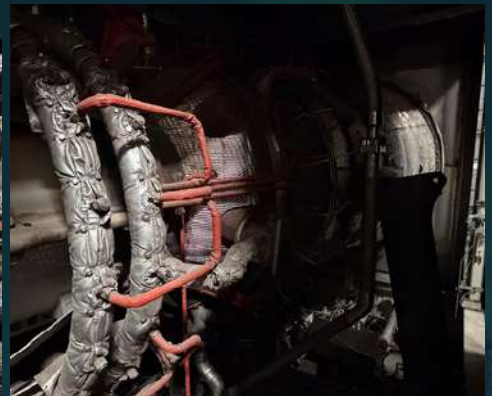
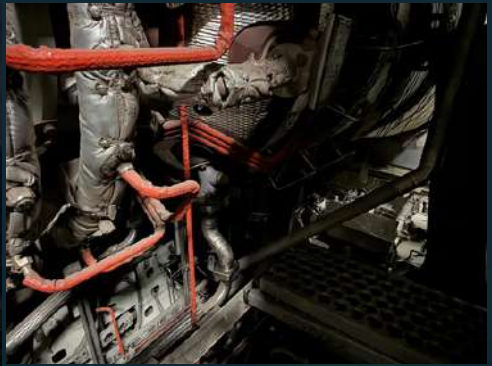
Solar Titan 130 Gas Turbine

Photos



Solar Titan 130 Gas Turbine


Photos




ReflowX

Contact Information

 Dubai, United Arab Emirates

 info@reflowx.com

 +971 503846311

 www.reflowx.com